

THE BUILDSEC **ALARM SYSTEM APP**

**Now with new
smart-home
functions**

EVERYTHING IN CLEAR VIEW, ALL YOUR HARD-EARNED PROPERTY AT A GLANCE

The alarm systems app enables you to remain in constant contact with your modern TELENOT hazard alarm system concept.

No matter what property needs to be protected against intrusion, fire, technical faults or unauthorized access:

- Apartments, permanent residences or holiday homes
- Commercial properties
- Offices, solicitors' premises or medical practices
- Craftsman's shops

the alarm system app lets you know whether everything is really OK.

You get all important status information on your smartphone. You are able to see where and at which precise location any intrusion or fire alarm has been triggered or if leakage water is detected. This allows you to take immediate action.

An encrypted transmission path between app and alarm system protects against manipulation: The app uses the ultra-secure 128-bit AES key (Advanced Encryption Standard) to guarantee absolutely secure data transmission. You can also receive all important status information remotely on your smartphone – regardless of whether you are currently out with friends, sitting in the theater, enjoying a meal in a restaurant, or traveling abroad.

The BuildSec alarm system app also offers comprehensive switching functions for smart-home applications. For example opening/closing of the garage door, turning outside lights on/off, lift your blinds up or bring them down, etc.

The clear and intuitive menu structure makes the alarm system easy to use.

And you can do all of this on your Internet-capable smartphone!

We are looking forward to demonstrating you all applications and options - just give us a call. Your recognized expert company for "guaranteed security" is happy to advise you!





YOUR MODERN ALARM SYSTEM IN MODULAR ARRANGEMENT.

The modern alarm system from TELENOT for your complete security – guaranteed – today and in the future.

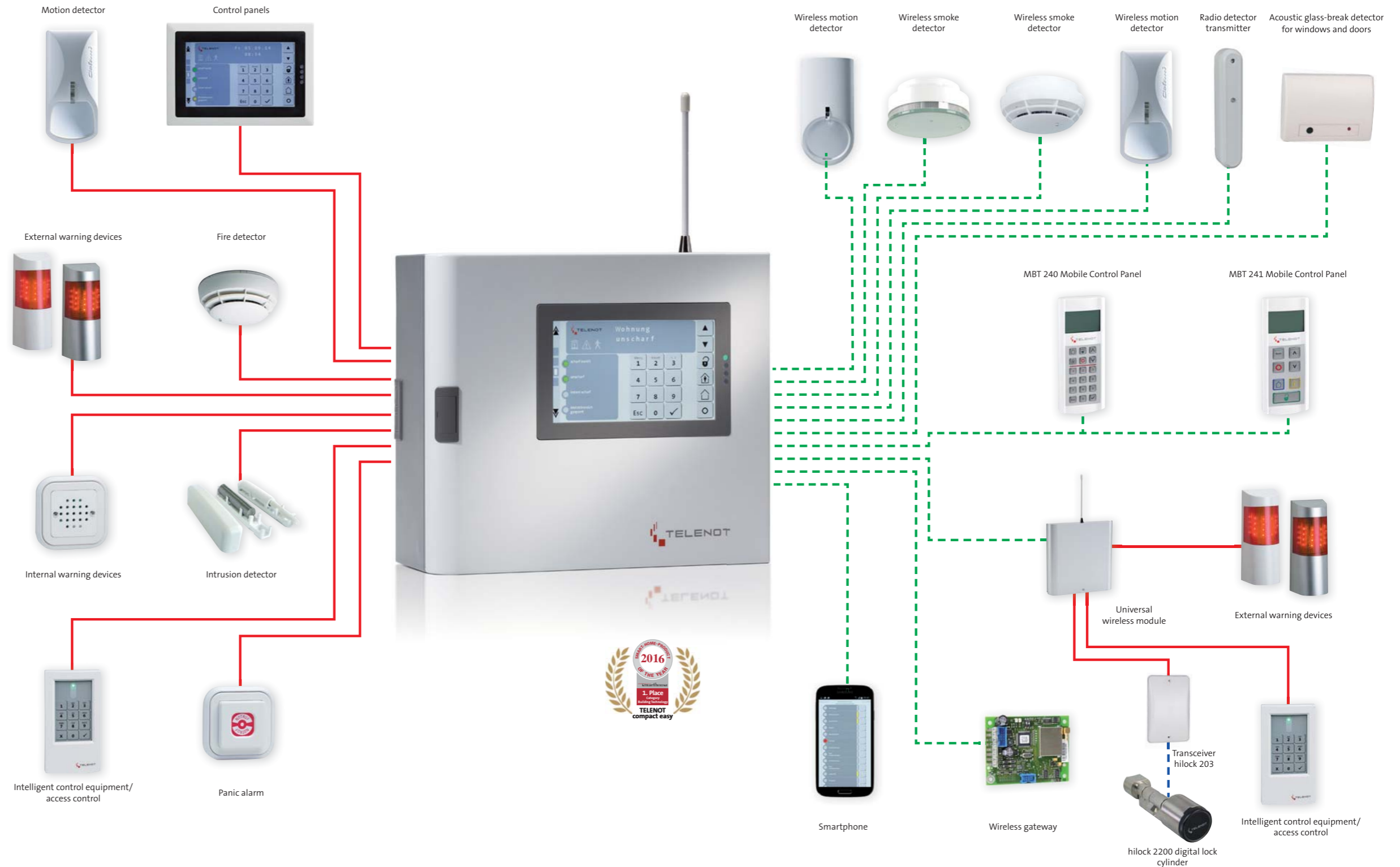
The TELENOT alarm system offers protection:

- against fires
- against intrusion
- against unauthorized access
- against technical faults such as water or gas leakage
- by emergency call
- by visual and audible alerting

The alarm system combines all installation types:

- conventional cabling
- modern BUS technology
- wireless installation

The highest level of dependability and functionality is documented by the device and system approval numbers. This means that you and your clients are able to enjoy reliable security – guaranteed.



Approval by VdS
Schadenverhütung



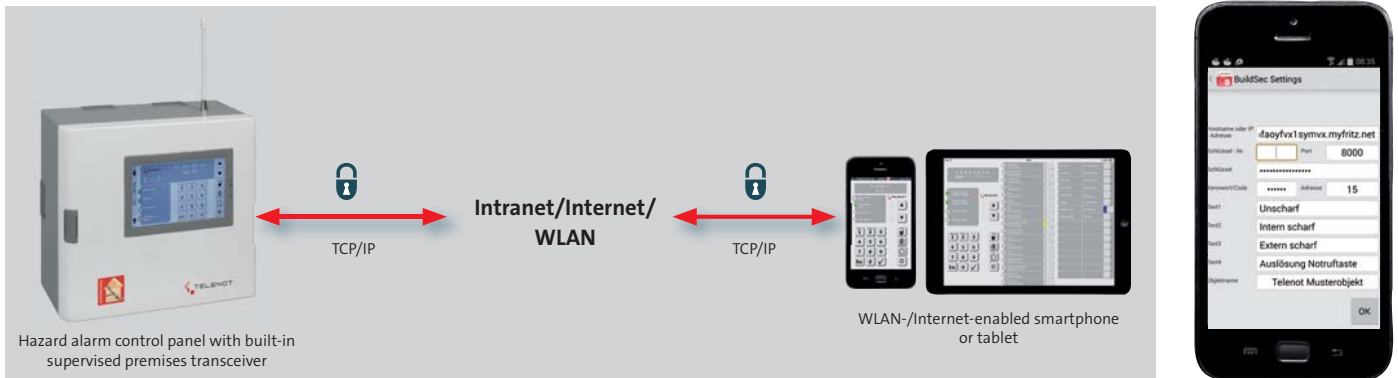
Swiss Association of installers of
security systems



Association of security
companies in Austria



FUNCTIONAL PRINCIPLE

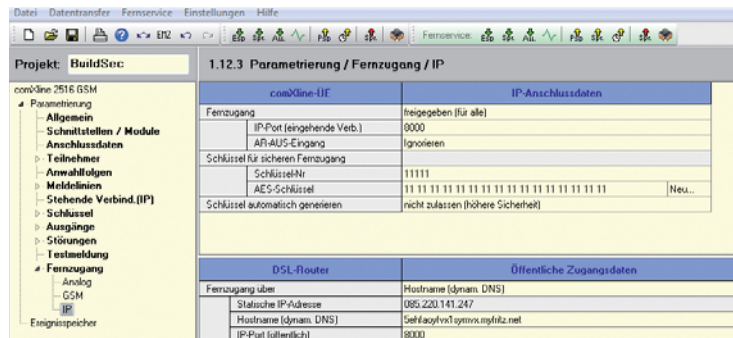


Responsible operator mode

- Entering of the license key on the comvisMC software data level

Installer mode

- one-man inspection
- Access for installers without authorisation code for 1 hour after authorisation by responsible operator.
- comvisMC BuildSec uses the same encrypted, secure transmission paths that are used for the remote service



Detailed information

The BuildSec alarm system app is a user software application for smartphones/tablets. It is used to operate the complex 200H/400H or compact easy hazard alarm control panels and to display their operating states using an NGN-generation supervised premises transceiver.

On-site access is available via WLAN, and remote access is possible via Internet-enabled smartphone or tablet.

The functional scope corresponds to the remote operation mode of the alarm system control panel. It can be operated using the control panel displayed on the smartphone. You benefit from a uniform menu structure and unique look across all operating units. The intelligent and intuitive menus are always a pleasure to use.

The responsive design of the alarm system app allows it to adjust to each terminal and enables portrait and landscape mode.

Operation

- Setting/unsetting of all supervised premises
- Displaying open dedicated alarm points (door, window, etc.)
- Alarm messages and location in plain text
- Display up to 32 detector zones
- Deactivating/locking detector zones
- Operate up to 16 switch/smart-home functions (doors, gates, blinds, lighting)
- Displaying an event memory
- Disable control panel code
- Swipe mode between individual operator levels

Requirement

- To access the hazard alarm system concepts, you need a comXline 1516/2516/3516 (firmware 11.41 onward) supervised premises transceiver with a serial connection to the IACP and an established Ethernet connection.
- complex 200H/400H hazard alarm control panel (firmware 23.53 onward) or compact easy IACP
- DSL connection/WLAN availability on site
- Release of the "remote service" function using IP in the comXline supervised premises transceiver
- iPhone/iPad with at least iOS 6 and Android smartphone/tablet with at least Version 4.2
- Installed comvisMC BuildSec (download from the Google Play Store or App Store)
- Purchase of the license key for each supervised premises transceiver in the TELENOT online shop
- comvisMC BuildSec Type No. 100075075



TELENOT security technology.
Protective. Attractive. Smart.

You have questions or want more information?
Contact us.

Contact Germany:

TELENOT ELECTRONIC GMBH

Wiesentalstraße 42
73434 Aalen
Germany

Telephone: +49 7361 946-4990
Fax: +49 7361 946-440

info@telenot.de
www.telenot.de

Contact Austria:

**TELENOT ELECTRONIC
Vertriebs-Ges.m.b.H.**

Josef-Haas-Straße 3
4655 Vorchdorf
Austria

Telephone: +43 7614 8258-0
Fax: +43 7614 8258-11

info@telenot.at
www.telenot.at

Contact Switzerland:

TELENOT ELECTRONIC AG

Neumühlestrasse 42
8406 Winterthur
Switzerland

Telephone +41 52 544 17 24
Fax +41 52 544 17 25

info@telenot.ch
www.telenot.ch



Certified according to
DIN EN ISO 9001 / No. S 897069



Approval by
VdS Schaden-
verhütung



Association of security
companies in Austria



Swiss Association of
installers of security
systems